

VIONIC®

Walk. Move. Live.®



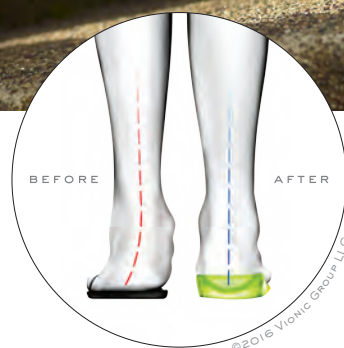
SS
/ 17

THE SCIENCE OF STYLE

VIONIC®

THE SCIENCE OF STYLE

AT THE CORE OF THE VIONIC BRAND IS THE BIOMECHANICAL TECHNOLOGY ENGINEERED INTO EVERY PAIR OF SHOES AND SANDALS. PODIATRIST-DESIGNED SUPPORT HELPS ALIGN THE FEET FOR COMFORT WITH EVERY STEP.



NATURAL ALIGNMENT

OUR BIOMECHANICAL FOOTBED SUPPORTS YOU FROM THE GROUND UP.

OUR NEWEST BIOMECHANICAL INNOVATION FROM VIONIC

DEVELOPED WITH SYNERGY IN MIND, THE ELATION 1.0 TRAINERS INSOLE, MIDSOLE AND OUTSOLE ARE SEAMLESSLY INTEGRATED INTO A DYNAMIC DUAL-DENSITY UNIT.



ATHLEISURE

STRUCTURED WITH PODIATRY
DESIGNED SUPPORT.



PINK OMBRE



BLACK/TEAL

ELATION 1.0

Women's Whole Sizes: 5-11

The Elation 1.0 seamlessly integrates the biomechanical insole, midsole and outsole in to a dynamic dual-density unit. Memory foam adds instant comfort and 1st Ray technology facilitates flexibility.

Upper: Man-Made & Textile

Footbed/Outsole: Co-Molded Proprietary EVA Compound with Rubber Outsole



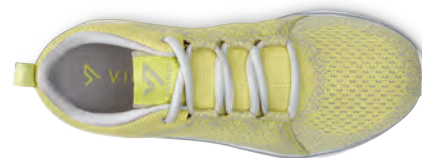
YELLOW



NAVY



BLACK/CHARCOAL



FLEX SIERRA

Women's Whole Sizes: 5-11

With an unprecedented blend of technical features, the Flex Sierra showcases an engineered knit upper for added breathability and a dual-density outsole. Rubber elements add traction under foot.

Upper: Textile **Footbed:** EVA **Outsole:** Durable Rubber



PINK



GREY



BLACK/BLACK



AGILE OPAL

Women's Whole Sizes: 5-11

Agile Opal gives classic style an active edge. With a mesh upper, elasticised double-straps across the vamp and a lightweight EVA footbed, this style stands out in a handful of vibrant hues.

Upper: Textile **Footbed:** EVA **Outsole:** Durable Rubber



NAVY



BERRY MULTI



BLACK/BLACK



AGILE KEA

Women's Whole Sizes: 5-12

Agile Kea is a simple slip-on with essential support. With a colourful mesh upper and twin gore panels on the vamp for ease of movement, all-around comfort is the name of the game.

Upper: Mesh **Footbed:** EVA **Outsole:** Durable Rubber



CORAL



NAVY



BLACK



AGILE FYN

Women's Whole Sizes: 5-12

Agile Fyn's sturdy EVA midsole adds stability to this sleek active sneaker. With a rubber tread for added traction, Agile Fyn also features contrasting ombre laces and a breathable mesh upper with a hint of stretch.

Upper: Textile **Footbed:** EVA **Outsole:** Durable Rubber

VIONIC

NOW WITH ELEVATED HEIGHT.



BLACK



PEWTER



TAN LEOPARD



PINK



PACIFIC HIGH TIDE

Women's Whole Sizes: 5-11

Taking the toe-post sandal to new heights, Pacific High Tide comes in six versatile colour ways. With a dual-density midsole for optimal comfort, it's the warm-weather essential you'll want to pack for every excursion.

Upper: Leather & Textile **Footbed:** EVA **Outsole:** Durable Rubber



PEWTER



WHITE



BLACK



PACIFIC CAPITOLA

Women's Whole Sizes: 5-11

Pacific Capitola features a micro-stud detail across the vamp, leather uppers and a buckle for adjustability. A dual density platform midsole adds height as well as comfort.

Upper: Leather **Footbed:** EVA **Outsole:** Durable Rubber



TAN SNAKE



BLACK SNAKE



PACIFIC BOLINAS

Women's Whole Sizes: 5-11

Pacific Bolinas offers three points of adjustability atop a dual-density platform midsole, while snake uppers add intrigue.

Upper: Printed Leather **Footbed:** EVA **Outsole:** Durable Rubber



BEST SELLING

CLASSICS.



RED



PEWTER METALLIC



GOLD CORK



BRONZE METALLIC



BROWN LEOPARD



BLACK



ISLANDER

Women's Whole Sizes: 5-12

An instant classic, our iconic Islander flip-flop now features more exciting variations. With bright pops of colour, classic neutrals, metallics and exotic prints, there's more to love than ever before.

Upper: Leather & Textile or Natural Cork & Textile

Footbed: EVA **Outsole:** Durable Rubber



BLUE



CHAMPAGNE



BLACK



ISLANDER RHINESTONES

Women's Whole Sizes: 5-11

The rock star of the Islander family, Islander Rhinestones is designed with the rebel in mind. Classic neutral colour ways and eye-catching bling are sure to earn a place in the spotlight.

Upper: Leather **Footbed:** EVA **Outsole:** Durable Rubber



REST BELLA II

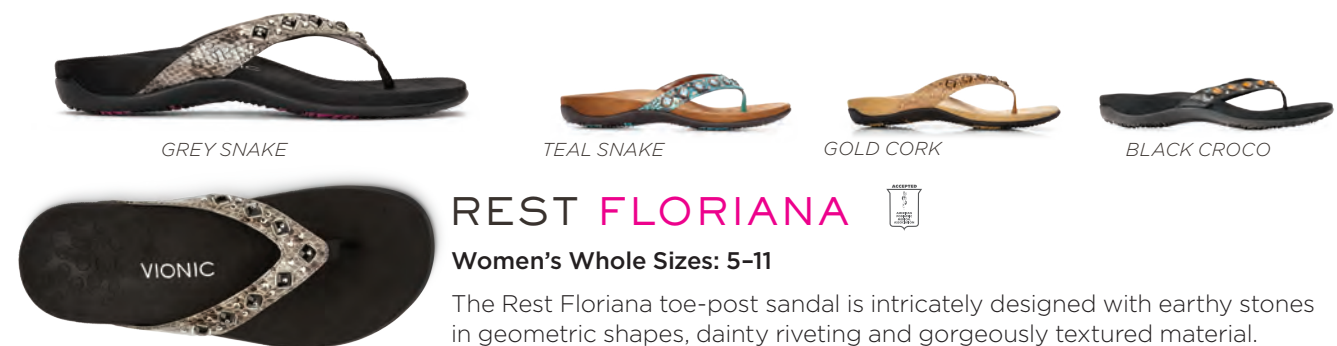


Women's Whole Sizes: 5-11

The best-selling Rest Bella II toe-post sandal is a true beauty with a dainty bow detail.

Upper: Man-Made or Natural Cork or Denim

Footbed: Microfiber Wrapped EVA **Outsole:** Durable Rubber



REST FLORIANA



Women's Whole Sizes: 5-11

The Rest Floriana toe-post sandal is intricately designed with earthy stones in geometric shapes, dainty riveting and gorgeously textured material.

Upper: Man-Made or Natural Cork **Footbed:** Microfiber Wrapped EVA

Outsole: Durable Rubber



REST NALA



Women's Whole Sizes: 5-11

A chic t-strap with an element of boldness, the Rest Nala's geometric stud details are sure to be the focal point of any summer look.

Upper: Leather **Footbed:** Microfiber Wrapped EVA

Outsole: Durable Rubber



REST SAMOA

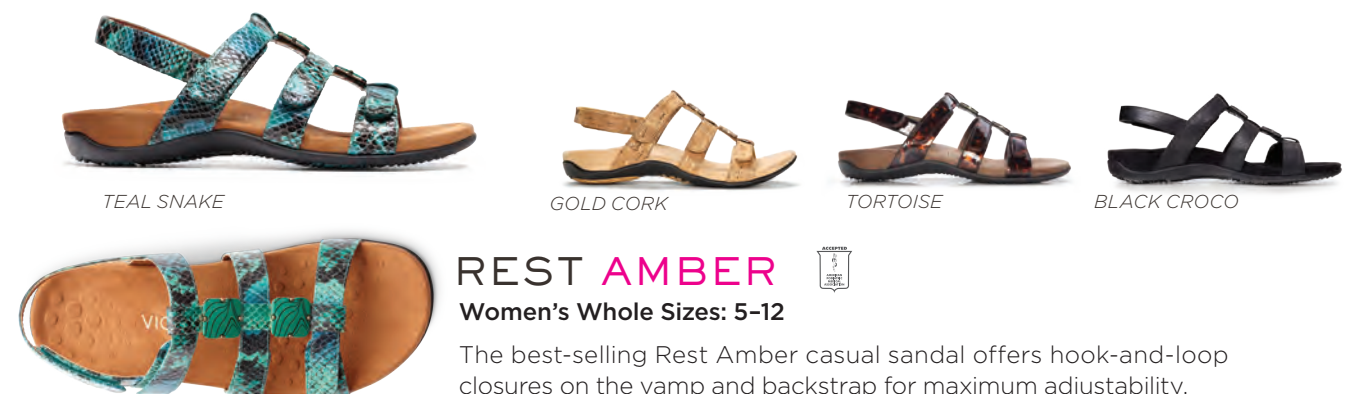


Women's Whole Sizes: 5-11

Rest Samoa is the optimal combination of gilded style and casual comfort. With a hint of gore and metallic detailing, it's an elegant take on a resort-ready style.

Upper: Printed Suede **Footbed:** Microfiber Wrapped EVA

Outsole: Durable Rubber



REST AMBER



Women's Whole Sizes: 5-12

The best-selling Rest Amber casual sandal offers hook-and-loop closures on the vamp and backstrap for maximum adjustability.

Upper: Man-Made or Natural Cork **Footbed:** Microfiber Wrapped EVA

Outsole: Durable Rubber

OUTDOOR

SANDALS WITH PROVEN
VIONIC SUPPORT.



CORAL



BLACK



SAGE BRAEDEN

Women's Whole: 5-11

A different kind of summer slide, the Sage Braeden offers a rugged outsole, adjustable straps and a triple-density midsole for contoured comfort.

Upper: Leather & Textile **Footbed:** EVA **Outsole:** Durable Rubber



GREY/YELLOW



CHARCOAL



SAGE DORRIN

Women's Whole Sizes: 5-11

Strap in for the long haul with the Sage Dorrin outdoor sandal. With a buckled strap for added adjustability and a triple-density midsole, this style offers support that's sure to last all day.

Upper: Textile **Footbed:** EVA **Outsole:** Durable Rubber



TAN LEOPARD



TAN



GREY ZEBRA



BLACK



INDULGE RELAX

Women's Whole Sizes: 5-12

Keep your toes free and your soles supported with the classic, adjustable Indulge Relax slipper. Designed in padded terry and faux fur for serious cuddliness.

Upper: Textile **Footbed:** Textile Covered EVA **Outsole:** TPR with Textile



GREY ZEBRA



TAN LEOPARD



TAN



BLACK



INDULGE GEMMA

Women's Whole Sizes: 5-12

This all-time favorite is a plush mule-style spa slipper. Features an adjustable hook-and-loop closure across the vamp for adjustability.

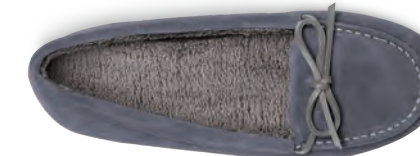
Upper: Textile **Footbed:** Textile Covered EVA **Outsole:** TPR with Textile



GREY



BLACK



COZY IDA

Women's Whole Sizes: 5-11

A simple, low-profile take on the classic house slipper, Cozy Ida's suede or textile uppers keep feet warm and supported.

Upper: Leather **Footbed:** Textile Covered EVA **Outsole:** TPR

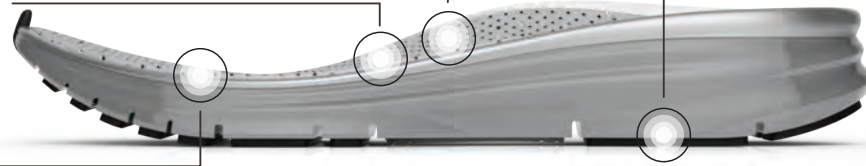
PURE SYNERGY

PERFORATED MEMORY FOAM LINES THE INSOLE FOR INSTANT COMFORT

BIOMECHANICAL FOOTBED WITH DEEP HEEL CUP AND CONTOURED ARCH

1ST RAY FLEXOR TECHNOLOGY PROVIDES INCREASED FLEXIBILITY

UNIQUE FLEX GROOVE DESIGN DELIVERS OPTIMUM FLEXIBILITY AND RESPONSIVENESS



NGAGE 1.0

THE NEWEST BIOMECHANICAL INNOVATION FROM VIONIC



GREY/ORANGE



BLACK



COBALT

Men's Whole Sizes: 7-13

Developed with synergy in mind, the NGAGE 1.0's insole, midsole and outsole are engineered into a single dual-density unit for improved dynamic function. Memory foam lines the insole for instant comfort, and 1st Ray technology facilitates improved flexibility beneath the first metatarsal.

Upper: Man-Made & Textile

Footbed/Outsole: Co-Molded Proprietary EVA Compound with Rubber Outsole



BLACK



LIGHT GREY

MEN'S CONTEST



Men's Whole Sizes: 7-13

Contest is constructed in lightweight mesh and durable man-made overlays to promote breathability and superior comfort with every wear.

Upper: Man-made with Mesh

Footbed: Removable Dual-Density EVA

Outsole: Durable Rubber



CAMO



BLACK



DARK BROWN

MEN'S ISLANDER



Men's Whole Sizes: 7-14

A warm-weather essential, the Islander flip-flop's sleek simplicity makes it the shoe you're sure to pack for your next excursion.

Upper: Nylon Webbing & Padded Jersey

Footbed: EVA

Outsole: Durable Rubber



CHOCOLATE/TAN



BLACK/GREY

MEN'S JOEL



Men's Whole Sizes: 7-14

Slip into luxury and unassuming good looks with full-grain, colour-blocked leather uppers, jersey padded lining and a soft, durable webbed toe post.

Upper: Full-Grain Leather

Footbed: EVA

Outsole: Durable Rubber



BROWN



BLACK

MEN'S GERRIT



Men's Whole Sizes: 7-14

Designed for a little adventure and a lot of support, the Gerrit sandal offers maximum customisation and ultimate comfort through three points of adjustability, fully-padded jersey lining and full grain leather uppers.

Upper: Nubuck Leather

Footbed: Embossed EVA

Outsole: Durable Rubber

IT'S WHAT'S **INSIDE** THAT COUNTS

VIONIC Insoles available in full length and 3/4 length

AVAILABLE IN WIDE SIZE CURVE FROM XXS TO XXL.



AWARD WINNING SUPPORT SUPPORTED BY OUR
30 DAY MONEY BACK GUARANTEE.

GREAT FOR EVERYDAY USE, WALKING, WORK, TRAVEL.

USE OUR 3/4 LENGTH INSOLE FOR LOW PROFILE FOOTWEAR
AND SHOES WITHOUT REMOVABLE INSOLES.

SPECIALLY DESIGNED FOR THE RIGOURS OF MORE ACTIVE USE SUCH AS
RUNNING AND GREAT FOR ATHLETIC SHOES.



NATURAL ALIGNMENT
OUR BIOMECHANICAL FOOTBED SUPPORTS
YOU FROM THE GROUND UP.

MARKETING **MATERIAL**

Tools to help you drive sales.



Acrylic Blocks



Table Top Stand



A3 & A4 Strut Cards



A1 Display Posters



Branded Slatwall shelves in single
and double shoe options

ADVERTISED IN: **New Idea** **that's life!** **Reader's Digest**



VIONIC®

Walk. Move. Live.®

GLOBAL FOOTCARE Australia
26 Ereton Drive, Labrador,
Queensland, 4215
P: 1300 856 226
F: 1300 858 668
E: sales@globalfootcare.com.au

GLOBAL FOOTCARE New Zealand
Unit 5, 9A Jupiter Grove,
Upper Hutt, Wellington, New Zealand
P: 0800 827 954
F: 09 926 1879
E: sales@globalfootcare.co.nz
www.vionicshoes.co.nz

GLOBAL FOOTCARE Singapore
35 Tannery Road #08-10A
Tannery Block, Ruby Industrial complex
Singapore 347740
P: 9386 4138
E: sales@globalfootcare.net
www.vionicshoes.sg

www.vionicshoes.com.au